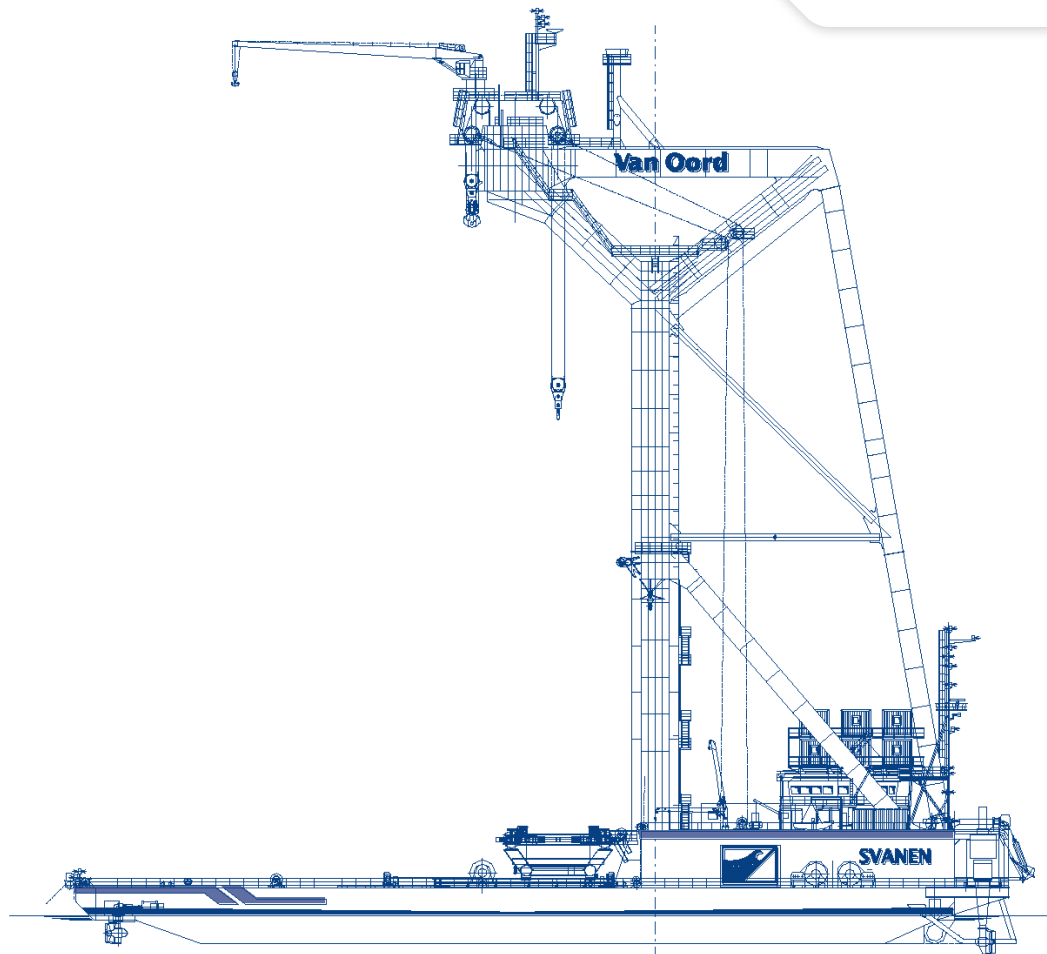


Equipment

Heavy lift installation vessel Svanen



Svanen

Name	Svanen	
Type	Heavy lift vessel	
Classification	Lloyd's Register ✕ 100 A1 ✕ LMC Crane pontoon, LA	
Year of construction	1990	
Dimensions	Length overall	102.75 m
	Breadth overall	74.60 m
	Depth	6.00 m
	Draught	4.50 m
Tonnage	14,035 GT - 4,210 NT	
Deadweight	11,008 tons	
Power Plant		
Total power installed	10,691 kW	
Main engines	2 x 2,400 kW	
Main power generating plant	3 x 1,325 kW and 3 x 660 V	
Auxiliary power generating plant	2 x 858 kW and 3 x 660 V	
Emergency power generating plant	1 x 200 kW and 3 x 380 V	
Electric main powersystem	660 / 380 V - 50 Hz	
Propulsion and Manoeuvring		
Propulsion	6,200 kW (4 x azimuth)	
Azimuthing thrusters aft	2 x 1,250 kW	
Tunnel thrusters fore	2 x 630 kW	
Azimuthing thrusters fore	2 x 1,850 kW	
Auxiliary crane	7.5 tons / 26.00 m	

Lifting capacity (incl. rigging)	8,200 tons
Lifting capacity (excl. rigging)	8,700 tons
Hoisting height (above deck)	76.00 m
Hoisting speed at max. load	0.35 m/min

Sailing speed	
without wind	7.0 knots
with 12 m/s wind at 10 m above waterlevel	2.8 knots

Mooring winches	
Single drum	8 x drum type
Spooling capacity	350 m steel wire of 56 mm

Anchors	8 x Stevpris 12 tons 8 x Delta 7.5 tons
---------	--

Contact

Van Oord
Offshore Wind Projects
 PO Box 458
 4200 AL Gorinchem
T +31 88 8265100
F +31 88 8265110
E area.owp@vanoord.com
I www.vanoord.com